

Sunday

Monday

Tuesday

Wednesday

Thursday

Friday

Saturday

February 2025

Willow Lane Activity Calendar



<p>Church Services 24 Hour Catholic Church Services EWTN- Channel 62-7 Christian Broadcasting TCT-CH 62-5</p> <p>10:30 Beverages & Reminiscing</p> <p><small>Groundhog Day</small></p>	<p>9:00 Rise & Shine 10:00 Noodle Ball/Hydration 11:00 Tabletop Bowling 2:00 Social Hour 3:00 1:1 Visits 4:00 Dinner Music 6:00 Bible Study-GH</p>	<p>9:00 Rise & Shine 10:00 Exercise/Hydration 11:00 Art Therapy 2:00 Social Hour 3:00 1:1 Visits 4:00 Dinner Music 5:00 Word Game</p>	<p>9:00 Rise & Shine 10:00 Noodle Ball/Hydration 11:00 Adult Coloring & Music 2:00 Social Hour 3:00 Reminiscing 4:00 Dinner Music</p> <p>COMMUNION</p>	<p>9:00 Rise & Shine 10:00 Exercise/Hydration 11:00 Busy Hands 2:00 Social Hour 3:00 Memory Games 4:00 Dinner Music 5:00 Craft "I Love Heart"</p>	<p>9:00 Rise & Shine 10:00 Noodle Ball/Hydration 11:00 Word Game 2:00 Social Hour 3:00 Cranium Crunches 4:00 Dinner & Movie</p>	<p>Church Services 24 Hour Catholic Church Services EWTN- Channel 62-7</p> <p>1:30 Bingo & Treats</p>
<p>Church Services 24 Hour Catholic Church Services EWTN- Channel 62-7 Christian Broadcasting TCT-CH 62-5</p> <p>10:30 Beverages & Reminiscing</p>	<p>9:00 Rise & Shine 10:00 Noodle Ball/Hydration 11:00 Tabletop Bowling 2:00 Social Hour 3:00 Scenic Drive 4:00 Dinner Music 6:00 Bible Study-GH</p>	<p>9:00 Rise & Shine 10:00 Exercise/Hydration 11:00 Art Therapy 2:00 Monthly Birthday Party-Café Entertainment by Music on a Mission! 3:00 1:1 Visits 4:00 Dinner Music 5:00 Word Game</p>	<p>9:00 Rise & Shine 10:00 Noodle Ball/Hydration 11:00 Adult Coloring & Music 2:00 Social Hour 3:00 Reminiscing 4:00 Dinner Music</p> <p>COMMUNION</p> <p><small>Tu B'Shevat Begins</small></p>	<p>9:00 Rise & Shine 10:00 Exercise/Hydration 11:00 Busy Hands 2:00 Social Hour 3:00 Memory Games 4:00 Dinner Music 5:00 Craft "Hedge Hog"</p>	<p>9:00 Rise & Shine 10:00 Noodle Ball/Hydration 11:00 Word Game 2:00 Valentine's Day Social 3:00 Cranium Crunches 4:00 Dinner & Movie</p> <p><small>Valentine's Day</small></p>	<p>Church Services 24 Hour Catholic Church Services EWTN- Channel 62-7</p> <p>1:30 Bingo & Treats</p>
<p>Church Services 24 Hour Catholic Church Services EWTN- Channel 62-7 Christian Broadcasting TCT-CH 62-5</p> <p>10:30 Beverages & Reminiscing</p>	<p>9:00 Rise & Shine 10:00 Noodle Ball/Hydration 11:00 Tabletop Bowling 2:00 Social Hour 3:00 President Trivia 4:00 Dinner Music 6:00 Bible Study-GH</p> <p><small>Presidents' Day (U.S.)</small></p>	<p>9:00 Rise & Shine 10:00 Exercise/Hydration 11:00 Art Therapy 2:00 Social Hour 3:00 1:1 Visits 4:00 Dinner Music 5:00 Word Game</p>	<p>9:00 Rise & Shine 10:00 Noodle Ball/Hydration 11:00 Adult Coloring & Music 2:00 Social Hour 3:00 Reminiscing 4:00 Dinner Music</p> <p>COMMUNION</p>	<p>9:00 Rise & Shine 10:00 Exercise/Hydration 11:00 Busy Hands 2:00 Social Hour 3:00 Memory Games 4:00 Dinner Music 5:00 Craft "Sand Necklace" 6:00 Entertainment with Barry Kelly-GH</p>	<p>9:00 Rise & Shine 10:00 Noodle Ball/Hydration 11:00 Word Game 2:00 Social Hour 3:00 Cranium Crunches 4:00 Dinner & Movie</p>	<p>Church Services 24 Hour Catholic Church Services EWTN- Channel 62-7</p> <p>1:30 Bingo & Treats</p>
<p>Church Services 24 Hour Catholic Church Services EWTN- Channel 62-7 Christian Broadcasting TCT-CH 62-5</p> <p>10:30 Beverages & Reminiscing</p>	<p>9:00 Rise & Shine 10:00 Noodle Ball/Hydration 11:00 Tabletop Bowling 2:00 Social Hour 3:00 Scenic Drive 4:00 Dinner Music 6:00 Bible Study-GH</p>	<p>9:00 Rise & Shine 10:00 Exercise/Hydration 11:00 Art Therapy 2:00 Social Hour 3:00 1:1 Visits 4:00 Dinner Music 5:00 Word Game</p>	<p>9:00 Rise & Shine 10:00 Noodle Ball/Hydration 11:00 Adult Coloring & Music 2:00 Social Hour 3:00 Reminiscing 4:00 Dinner Music</p> <p>COMMUNION</p>	<p>9:00 Rise & Shine 10:00 Exercise/Hydration 11:00 Busy Hands 2:00 Social Hour 3:00 Memory Games 4:00 Dinner Music 5:00 Craft-Bird Houses</p>	<p>9:00 Rise & Shine 10:00 Noodle Ball/Hydration 11:00 Word Game 2:00 Social Hour 3:00 Cranium Crunches 4:00 Dinner & Movie</p> <p><small>Ramadan Begins</small></p>	<p>Calendar Subject to Change!</p> 

For any questions, please contact Monica Rapis, Life Enrichment Director at 440-930-6607 or ext. 24607.

Sunday

Monday

Tuesday

Wednesday

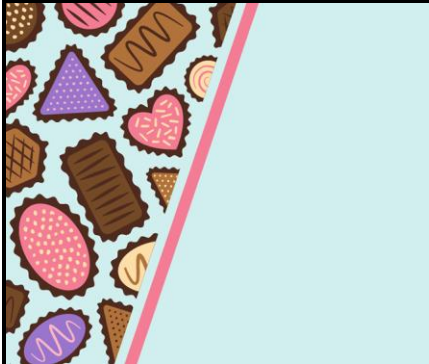
Thursday

Friday

Saturday

February 2025

Main Street Care Center Activity Calendar

	<h1>February 2025</h1> <h2>Main Street Care Center Activity Calendar</h2>					
<p>Church Services 24 Hour Catholic Church Services EWTN- Channel 62-7 Christian Broadcasting TCT-CH 62-5 1:30 UNO-GH</p> <p><small>Groundhog Day</small></p>	<p>10:00 Moving to Music-MS 11:00 Bingo-GH 2:00 Happy Hour-Café 3:00 Manicures-GH 4:00 Table Tidbits-100 Hall 6:00 Bible Study</p>	<p>10:00 Exercise-MS 10:30 Wal-Mart Shopping! See Activities for Details! 11:00 Craft-GH "Decorating Valentine's Day Tree" 2:00 Happy Hour-Café 4:00 Word Game-200 Hall</p>	<p>10:00 Moving to Music-MS 11:00 Bingo-GH 2:00 Happy Hour-Café "Whiskey Wednesday" 4:00 Current Events-300 Hall</p> <p>COMMUNION</p>	<p>10:00 Exercise-MS 11:00 Art Therapy-GH "Water Color" 2:00 Happy Hour-Café "Hot Appetizer" 4:00 Reminiscing-100 Hall</p>	<p>10:00 Moving to Music-MS 11:00 Bingo-GH 12:15 Fast Food Friday-GH "SUBWAY" 2:00 Happy Hour-Café 4:00 Not Like Others Game-200 Hall</p>	<p>Church Services 24 Hour Catholic Church Services EWTN- Channel 62-5 10:30 Movie & Snack-GH</p>
<p>Church Services 24 Hour Catholic Church Services EWTN- Channel 62-7 Christian Broadcasting TCT-CH 62-5 1:30 Super Bowl Social-Cafe</p>	<p>10:00 Moving to Music-MS 11:00 Bingo-GH 2:00 Happy Hour-Café 3:00 Manicures-GH 4:00 Table Tidbits-200 Hall 6:00 Bible Study</p>	<p>10:00 Exercise-MS 11:00 Craft-GH "Sweet Heart Button Frames" 2:00 Happy Hour-Café 4:00 Word Game-300 Hall</p>	<p>10:00 Moving to Music-MS 11:00 Bingo-GH 2:00 Happy Hour-Café "Whiskey Wednesday" 4:00 Current Events-100 Hall</p> <p>COMMUNION</p> <p><small>Tu B'Shevat Begins</small></p>	<p>10:00 Exercise-MS 11:00 Art Therapy-GH "Crinkle Heart Art" 2:00 Happy Hour-Café "Hot Appetizer" 4:00 Reminiscing-300 Hall</p>	<p>10:00 Moving to Music-MS 11:00 Bingo-GH 12:15 Fast Food Friday-GH "PIZZA HUT" 2:00 Sweet Heart Happy Hour-Café 4:00 Word Search-300 Hall</p> <p><small>Valentine's Day</small></p>	<p>Church Services 24 Hour Catholic Church Services EWTN- Channel 62-5 10:30 Movie & Snack-GH</p>
<p>Church Services 24 Hour Catholic Church Services EWTN- Channel 62-7 Christian Broadcasting TCT-CH 62-5 1:30 UNO-GH</p>	<p>10:00 Moving to Music-MS 11:00 Bingo-GH 2:00 Happy Hour-Café 3:00 Manicures-GH 4:00 Presidents' Day Trivia-300 Hall 6:00 Bible Study</p> <p><small>Presidents' Day (U.S.)</small></p>	<p>10:00 Exercise-MS 11:00 Craft-GH "Heart Warming Hand Warmers" 2:00 Happy Hour-Café 3:00 Food Forum-GH 3:30 Resident Council-GH 4:00 Word Game-100 Hall</p>	<p>10:00 Moving to Music-MS 11:00 Bingo-GH 2:00 Happy Hour-Café "Whiskey Wednesday" 4:00 Current Events-200 Hall</p> <p>COMMUNION</p>	<p>10:00 Exercise-MS 11:00 Art Therapy-GH "Donut Painting" 2:00 Happy Hour-Café "Hot Appetizer" 4:00 Reminiscing-100 Hall 6:00 Entertainment with Barry Kelly-GH</p>	<p>10:00 Moving to Music-MS 11:00 Bingo-GH 12:15 Fast Food Friday-GH "WENDY'S" 2:00 Happy Hour-Café 4:00 Friendly Feud-100 & 200 Halls</p>	<p>Church Services 24 Hour Catholic Church Services EWTN- Channel 62-5 3:00 Entertainment by Abraham with Church on the Move!</p>
<p>Church Services 24 Hour Catholic Church Services EWTN- Channel 62-7 Christian Broadcasting TCT-CH 62-5 1:30 UNO-GH</p>	<p>10:00 Moving to Music-MS 11:00 Bingo-GH 2:00 Happy Hour-Café 3:00 Manicures-GH 4:00 Table Tidbits-100 Hall 6:00 Bible Study</p>	<p>10:00 Exercise-MS 10:30 Dollar Tree Shopping! See Activities for Details! 11:00 Craft-GH "Faux Gumdrop Garland" 2:00 Happy Hour-Café 4:00 Word Game-200 Hall</p>	<p>10:00 Moving to Music-MS 11:00 Bingo-GH 2:00 Happy Hour-Café "Whiskey Wednesday" 4:00 Current Events-100 Hall</p> <p>COMMUNION</p>	<p>10:00 Exercise-MS 11:00 Art Therapy-GH "Resident Choice Project" 2:00 Happy Hour-Café "Hot Appetizer" 4:00 Reminiscing-100 Hall</p>	<p>10:00 Moving to Music-MS 11:00 Bingo-GH 12:15 Fast Food Friday-GH "CHINESE" 2:00 Happy Hour-Café 4:00 Opposite Word Stickman Game-300 Hall</p> <p><small>Ramadan Begins</small></p>	<p>Calendar Subject to Change!</p> 

For any questions, please contact Monica Rapis, Life Enrichment Director at 440-930-6607 or ext. 24607.

Sunday

Monday

Tuesday

Wednesday

Thursday

Friday

Saturday

February 2025

Avenue Assisted Living Activity Calendar



<p>Church Services 24 Hour Catholic Church Services EWTN- Channel 62-5</p> <p>10:30 Refreshments & Painting</p> <p><small>Groundhog Day</small></p>	<p>9:00 Room Visits with Activities 10:30 Exercise-1LR 10:45 Manicures-3CR 11:15 Buzzword-2DR 2:30 Horseracing-Pool Table 3:00 Happy Hour-3BR 4:00 Word Game-2DR</p>	<p>9:00 Room Visits with Activities 10:30 Exercise-1LR 11:15 Sing A Long-2DR 2:00 Bingo-2DR 3:00 Happy Hour & Trivia-3DR</p>	<p>9:30 Morning Devotion-1LR 10:30 Exercise-1LR 11:15 Buzzword-2DR 3:00 Happy Hour-3BR 4:00 Word Game-2DR</p>	<p>9:00 Room Visits with Activities 10:30 Exercise-1LR 11:15 Sing A Long-2DR 2:00 Bingo-2DR 3:00 Happy Hour & Trivia-3DR</p>	<p>10:00 Catholic Mass-GH 1:30 Craft-3CR "Sweet Heart Button Frames" 3:00 Happy Hour-3BR 4:00 Dinner & Movie</p>	<p>Church Services 24 Hour Catholic Church Services EWTN-Channel 62-7</p> <p>2:00 Yahtzee & Refreshments-3CR</p>
<p>Church Services 24 Hour Catholic Church Services EWTN- Channel 62-5</p> <p>11:30 Super Bowl Happy Hour-2DR</p>	<p>9:00 Room Visits with Activities 10:30 Exercise-1LR 10:45 Manicures-3CR 11:15 Buzzword-2DR 2:30 Board Games-3CR 3:00 Happy Hour & CLR Dice Game-3BR 4:00 February I.Q.-2DR</p>	<p>9:00 Room Visits with Activities 10:30 Exercise-1LR 11:15 Sing A Long-2DR 2:00 Bingo-2DR 3:00 Happy Hour & Trivia-3DR</p>	<p>9:30 Morning Devotion-1LR 10:30 Exercise-1LR 11:15 Buzzword-2DR 1:30 Wal-Mart Shopping! See Activities for Details! 3:00 Happy Hour-3BR 4:00 Word Game-2DR</p> <p><small>Tu B'Shevat Begins</small></p>	<p>9:00 Room Visits with Activities 10:30 Exercise-1LR 11:15 Sing A Long-2DR 2:00 Bingo-2DR 3:00 Happy Hour & Trivia-3DR</p>	<p>10:30 Exercise-1LR 1:30 Art Therapy-3CR "Crinkle Heart Art" 3:00 Monthly Birthday Party-3BR 4:00 Dinner & Movie</p> <p><small>Valentine's Day</small></p>	<p>Church Services 24 Hour Catholic Church Services EWTN-Channel 62-7</p> <p>2:00 Yahtzee & Refreshments-3CR</p>
<p>Church Services 24 Hour Catholic Church Services EWTN- Channel 62-5</p> <p>10:30 Refreshments & Painting</p>	<p>9:00 Room Visits with Activities 10:30 Exercise-1LR 10:45 Manicures-3CR 11:15 Buzzword-2DR 2:30 UNO-3CR 3:00 Happy Hour & Presidents Day Trivia-3BR 4:00 Word Game-2DR</p> <p><small>Presidents' Day (U.S.)</small></p>	<p>9:00 Room Visits with Activities 10:30 Exercise-1LR 11:15 Sing A Long-2DR 2:00 Bingo-2DR 3:00 Happy Hour & Trivia-3DR</p>	<p>9:30 Morning Devotion-1LR 10:30 Exercise-1LR 11:15 Buzzword-2DR 1:30 Food Forum-3BR 2:00 Resident Council-3BR 3:00 Happy Hour-3BR 4:00 Word Game-2DR</p>	<p>9:00 Room Visits with Activities 10:30 Exercise-1LR 11:15 Sing A Long-2DR 2:00 Bingo-2DR 3:00 Happy Hour & Trivia-3DR</p>	<p>10:30 Exercise-1LR 1:30 Craft-3CR "Heart Hand Warmers" 3:00 Happy Hour-3BR 4:00 Dinner & Movie</p>	<p>Church Services 24 Hour Catholic Church Services EWTN-Channel 62-7</p> <p>1:30 Entertainment-2DR Abraham with Church on the Move!</p>
<p>Church Services 24 Hour Catholic Church Services EWTN- Channel 62-5</p> <p>10:30 Refreshments & Pokeno</p>	<p>9:00 Room Visits with Activities 10:30 Exercise-1LR 10:45 Manicures-3CR 11:15 Buzzword-2DR 2:00 Board Games-3CR 3:00 Happy Hour-3BR 4:00 Word Game-2DR</p>	<p>9:00 Room Visits with Activities 10:30 Exercise-1LR 11:15 Sing A Long-2DR 2:00 Bingo-2DR 3:00 Happy Hour & Trivia-3DR</p>	<p>9:30 Morning Devotion-1LR 10:30 Exercise-1LR 11:15 Buzzword-2DR 1:30 Drug Mart Shopping! See Activities for Details! 3:00 Happy Hour-3BR 4:00 Word Game-2DR</p>	<p>9:00 Room Visits with Activities 11:00 Lunch Outing at Rush Inn Bar & Grill! See Activities for Details! 2:00 Bingo-2DR 3:00 Happy Hour & Trivia-3DR</p>	<p>10:30 Exercise-1LR 1:30 Art Therapy-3CR "Resident Choice Project" 3:00 Happy Hour-3BR 4:00 Dinner & Movie</p> <p><small>Ramadan Begins</small></p>	<p>Calendar Subject to Change!</p>

For any questions, please contact Monica Rapis, Life Enrichment Director at 440-930-6607 or ext. 24607.

Sunday

Monday

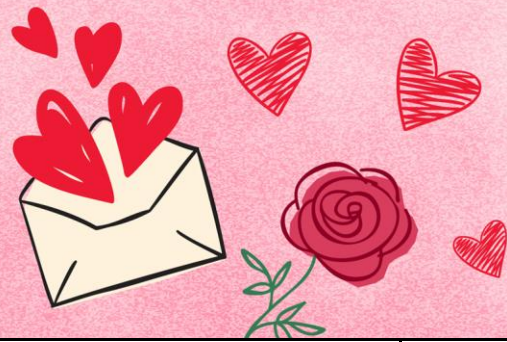
Tuesday

Wednesday

Thursday

Friday

Saturday



February 2025



Parkway Activity Calendar

24 Hour Catholic Church Services
EWTN-Channel 62-7

1:30 Entertainment by Abraham with Church on the Move!

<p>Church Services 2</p> <p>24 Hour Catholic Church Services EWTN- Channel 62-5</p> <p>1:30 Afternoon Refreshments & Painting</p> <p><small>Groundhog Day</small></p>	<p>9:00 1:1 Visits with Activities 3</p> <p>10:00 Exercise/Hydration</p> <p>10:30 Reading with Activities</p> <p>11:00 Busy Hands</p> <p>2:00 Social Hour</p> <p>3:00 Art Therapy</p> <p>4:00 Word Game</p>	<p>9:00 1:1 Visits with Activities 4</p> <p>10:00 Exercise/Hydration</p> <p>10:30 Reading with Activities</p> <p>11:00 Crafty Tuesday "I Love Heart Craft"</p> <p>2:00 Social Hour</p> <p>3:00 Bingo</p> <p>4:00 Sing A Long</p>	<p>9:00 1:1 Visits with Activities 5</p> <p>10:00 Exercise/Hydration</p> <p>10:30 Reading with Activities</p> <p>11:00 Tabletop Bowling</p> <p>2:00 Social Hour</p> <p>3:00 Matching Game</p> <p>4:00 Trivia</p>	<p>9:00 1:1 Visits with Activities 6</p> <p>10:00 Exercise/Hydration</p> <p>10:30 Reading with Activities</p> <p>11:00 Manicures</p> <p>2:00 Social Hour</p> <p>3:00 Bingo</p> <p>4:00 Reminiscing</p>	<p>9:00 1:1 Visits with Activities 7</p> <p>10:00 Exercise/Hydration</p> <p>10:30 Reading with Activities</p> <p>11:00 Crossword Puzzle</p> <p>1:30 Bible Study with Mark</p> <p>2:30 Social Hour & Table Tidbits</p> <p>4:00 February I.Q.</p>	<p>24 Hour Catholic Church Services 8</p> <p>EWTN-Channel 62-7</p> <p>10:30 Morning Refreshments & Reminiscing</p>
<p>Church Services 9</p> <p>24 Hour Catholic Church Services EWTN- Channel 62-5</p> <p>1:30 Super Bowl Social Hour</p>	<p>9:00 1:1 Visits with Activities 10</p> <p>10:00 Exercise/Hydration</p> <p>10:30 Reading with Activities</p> <p>11:00 Busy Hands</p> <p>2:00 Social Hour</p> <p>3:00 Art Therapy</p> <p>4:00 Word Game</p>	<p>9:00 1:1 Visits with Activities 11</p> <p>10:00 Exercise/Hydration</p> <p>10:30 Reading with Activities</p> <p>11:00 Crafty Tuesday "Hedge Hog Craft"</p> <p>2:00 Social Hour</p> <p>3:00 Bingo</p> <p>4:00 Sing A Long</p>	<p>9:00 1:1 Visits with Activities 12</p> <p>10:00 Exercise/Hydration</p> <p>10:30 Reading with Activities</p> <p>11:00 Tabletop Bowling</p> <p>2:00 Social Hour</p> <p>3:00 Matching Game</p> <p>4:00 Trivia</p> <p><small>Tu B'Shevat Begins</small></p>	<p>9:00 1:1 Visits with Activities 13</p> <p>10:00 Exercise/Hydration</p> <p>10:30 Reading with Activities</p> <p>11:00 Manicures</p> <p>2:00 Social Hour</p> <p>3:00 Bingo</p> <p>4:00 Reminiscing</p>	<p>9:00 1:1 Visits with Activities 14</p> <p>10:00 Exercise/Hydration</p> <p>10:30 Reading with Activities</p> <p>11:00 Crossword Puzzle</p> <p>2:00 Monthly Birthday Party with DJ Mark!</p> <p>3:00 Art Therapy</p> <p>4:00 Valentine's Day Trivia</p> <p><small>Valentine's Day</small></p>	<p>24 Hour Catholic Church Services 15</p> <p>EWTN-Channel 62-7</p> <p>10:30 Morning Refreshments & Reminiscing</p>
<p>Church Services 16</p> <p>24 Hour Catholic Church Services EWTN- Channel 62-5</p> <p>1:30 Afternoon Refreshments & Painting</p>	<p>9:00 1:1 Visits with Activities 17</p> <p>10:00 Exercise/Hydration</p> <p>10:30 Reading with Activities</p> <p>11:00 Busy Hands</p> <p>2:00 Social Hour</p> <p>3:00 Art Therapy</p> <p>4:00 Word Game</p> <p><small>Presidents' Day (U.S.)</small></p>	<p>9:00 1:1 Visits with Activities 18</p> <p>10:00 Exercise/Hydration</p> <p>10:30 Reading with Activities</p> <p>11:00 Crafty Tuesday "Sand Necklaces"</p> <p>2:00 Social Hour</p> <p>3:00 Bingo</p> <p>4:00 Sing A Long</p>	<p>9:00 1:1 Visits with Activities 19</p> <p>10:00 Exercise/Hydration</p> <p>10:30 Reading with Activities</p> <p>11:00 Tabletop Bowling</p> <p>2:00 Social Hour</p> <p>3:00 Matching Game</p> <p>4:00 Trivia</p>	<p>9:00 1:1 Visits with Activities 20</p> <p>10:00 Exercise/Hydration</p> <p>10:30 Reading with Activities</p> <p>11:00 Manicures</p> <p>2:00 Social Hour</p> <p>3:00 Bingo</p> <p>4:00 Reminiscing</p>	<p>9:00 1:1 Visits with Activities 21</p> <p>10:00 Exercise/Hydration</p> <p>10:30 Reading with Activities</p> <p>11:00 Crossword Puzzle</p> <p>2:00 Social Hour</p> <p>3:00 Art Therapy</p> <p>4:00 Table Tidbits</p> <p>5:00 Dinner & Movie</p>	<p>24 Hour Catholic Church Services 22</p> <p>EWTN-Channel 62-7</p> <p>10:30 Morning Refreshments & Reminiscing</p>
<p>Church Services 23</p> <p>24 Hour Catholic Church Services EWTN- Channel 62-5</p> <p>1:30 Afternoon Refreshments & Adult Coloring</p>	<p>9:00 1:1 Visits with Activities 24</p> <p>10:00 Exercise/Hydration</p> <p>10:30 Reading with Activities</p> <p>11:00 Busy Hands</p> <p>2:00 Social Hour</p> <p>3:00 Art Therapy</p> <p>4:00 Word Game</p>	<p>9:00 1:1 Visits with Activities 25</p> <p>10:00 Exercise/Hydration</p> <p>10:30 Reading with Activities</p> <p>11:00 Crafty Tuesday "Bird House Craft"</p> <p>2:00 Social Hour</p> <p>3:00 Bingo</p> <p>4:00 Sing A Long</p>	<p>9:00 1:1 Visits with Activities 26</p> <p>10:00 Exercise/Hydration</p> <p>10:30 Reading with Activities</p> <p>11:00 Tabletop Bowling</p> <p>2:00 Social Hour</p> <p>3:00 Matching Game</p> <p>4:00 Trivia</p>	<p>9:00 1:1 Visits with Activities 27</p> <p>10:00 Exercise/Hydration</p> <p>10:30 Reading with Activities</p> <p>11:00 Manicures</p> <p>2:00 Social Hour</p> <p>3:00 Bingo</p> <p>4:00 Reminiscing</p>	<p>9:00 1:1 Visits with Activities 28</p> <p>10:00 Exercise/Hydration</p> <p>10:30 Reading with Activities</p> <p>11:00 Crossword Puzzle</p> <p>2:00 Social Hour</p> <p>3:00 Art Therapy</p> <p>4:00 Table Tidbits</p> <p>5:00 Dinner & Movie</p> <p><small>Ramadan Begins</small></p>	<p>Calendar Subject to Change!</p>

For any questions, please contact Monica Rapis, Life Enrichment Director at 440-930-6607 or ext. 24607.

